



GATEWAY

ENOCEAN to RS 232, 485 MODBUS RTU

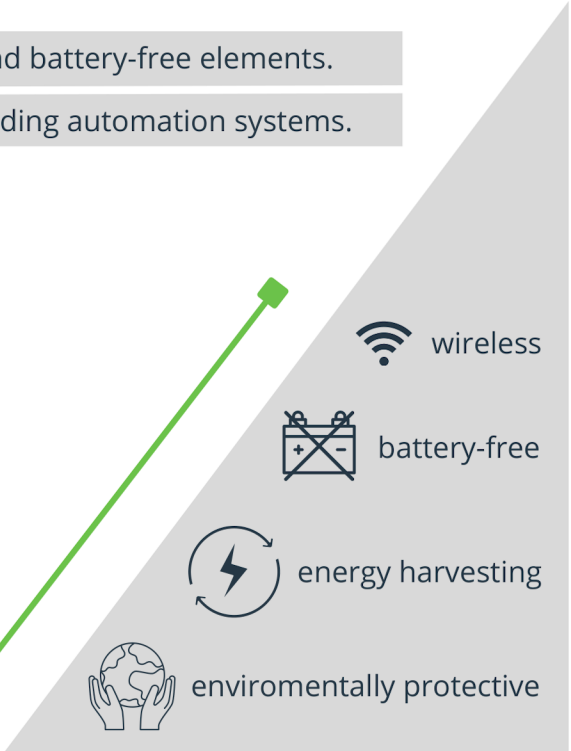
ENOCEAN-GWY-MOD

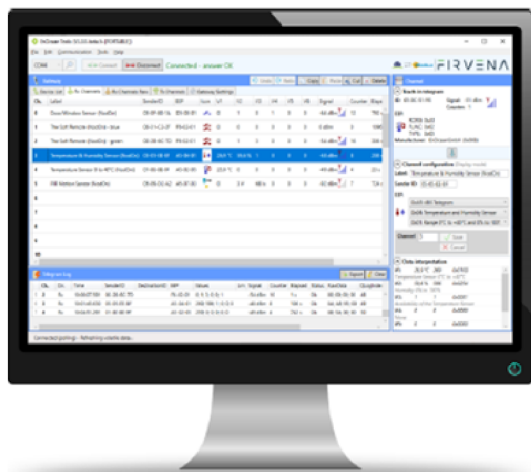
ENOCEAN-GWY-MOD is a bidirectional gateway that collects data from EnOcean wireless elements, stores their values in register tables and sends them via Modbus RTU communication (RS 485 or RS 232) to the control system. In the opposite direction, the gateway receives commands from control system in order to control these elements.

ENOCEAN is a set of technologies that enables the use of wireless and battery-free elements.

MODBUS PROTOCOL is simple to implement and widely used in building automation systems.

- bidirectional communication
- conversion of raw data to specific values
- open product for various EnOcean elements and manufacturers
- small dimensions = dimensions of 1 module
- repeater function
- EMC tests for residential building and industrial environments
- wireless, simple and ecological technology
- available for 868 MHz, optional for 902 MHz
- clear administration via EnOcean Tools Application
- simple installation in the control cabinet





The tool enables:

- to connect / disconnect EnOcean elements
- to monitor their states, values, communication intervals and signal strength
- to control the EnOcean elements, in case of more installed gateways to monitor and compare on which gateway each element has better signal and to assign the element with better signal to its gateway
- manual or automatical assigning of the elements on position with use of ID number
- setting of the type of communication (RS 485, RS 232, USB) and baud rate
- to upgrade the firmware

TECHNICAL DATA

Category	Parameter	Value
Electrical data	rated voltage	24 V DC (recommended value for power supply)
	range possibility for power supply	10 – 25 V DC
	own consumption of device	80 mA
	power consumption	1,92 W
Communication RS 232	protocol	MODBUS RTU slave
	supported functions	3, 6, 16
	baudrate	optional from 1,2 kBd to 115,2 kBd
	number of bits	8
	stopbit	1, 2
	parity	no, even, odd
	delay between received and sent message	basic + optional 0...200ms
	adjustable addresses	1...247
	max. number of device on the line	1
	indication	yes, LED yellow colour RS 232
Communication RS 485	protocol	MODBUS RTU slave
	supported functions	3, 6, 16
	baudrate	optional from 1,2 kBd to 115,2 kBd
	number of bits	8
	stopbit	1, 2
	parity	no, even, odd
	delay between received and sent message	basic + optional 0...200ms
	adjustable addresses	1...32 247
	max. number of device on the line	32
	indication	yes LED yellow colour RS 485
Communication USB	protocol	MODBUS RTU slave
	supported functions	3, 6, 16
	baudrate	115,2 kBd
	number of bits	8
	stopbit	1
	parity	no
	adjustable addresses	1
	max. number of device on the line	1
Number of EnOcean elements	maximum number of EnOcean elements for 1 GWY	40
	Supported elements of communication	RAW DATA: RPS/1BS, 4BS, VLD
Operating values	cover	IP 20
	operating temperature	-20 ... +70°C
	relative air humidity	max. 80 %
Dimensions in mm	without antenna, width x height x depth	17,5 x 56,4 x 102
Weight in g	without antenna	53

FIRVENA



FIRVENA s.r.o.
 Zamecke namesti 26
 738 01 Frydek-Mistek
 Czech Republic



+420 777 879 762
 +420 558 111 253



firvena@firvena.cz



www.firvena.com