



GATEWAY

ENOCEAN to RS 232, 485 Modbus RTU

ENOCEAN-GWY-MOD is a bidirectional gateway that collects data from EnOcean wireless elements, stores their values in register tables and sends them via Modbus RTU communication (RS 485 or RS 232) to the control system. In the opposite direction, the gateway receives commands from control system in order to control these elements.

ENOCEAN is a set of technologies that enables the use of wireless and battery-free elements.

MODBUS PROTOCOL is simple to implement and widely used in building automation systems.

ENOCEAN-GWY-MOD

- bidirectional communication
- conversion of raw data to specific values
- open product for various EnOcean elements and manufacturers
- small dimensions = dimensions of 1 module
- repeater function
- EMC tests for residential building and industrial environments
- wireless, simple and ecological technology
- available for 868 MHz, optional for 902 MHz
- clear administration via EnOcean Tools Application
- simple installation in the control cabinet



wireless



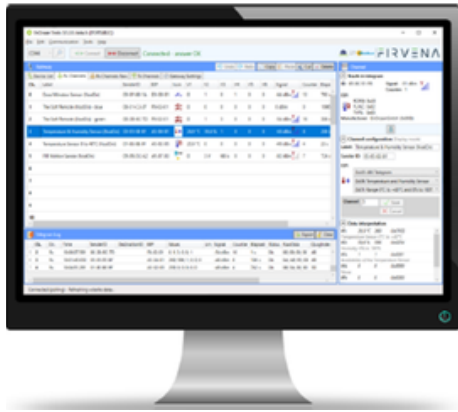
battery-free



energy harvesting



environmentally protective



The tool enables to:

- connect / disconnect EnOcean elements
- monitor their states, values, communication intervals and signal strength
- control the EnOcean elements, in case of more installed gateways to monitor and compare on which gateway each element has better signal and to assign the element with better signal to its gateway
- assign manually or automatically elements on position with use of ID number
- set the type of communication (RS 485, RS 232, USB) and baud rate
- upgrade the firmware



TECHNICAL DATA

CATEGORY	PARAMETER	VALUE
Electrical data	Rated supply voltage	24 V DC
	Supply voltage range	10 - 25 V DC
	Rated input current	80 mA
	Rated input power	1.92 W
Communication RS 232	Protocol	Modbus RTU slave10, 100 Mbit/s
	Supported functions	3, 6, 16
	Baudrate	Optional from 1,2 kBd to 115,2 kBd
	Number of bits	8
	Stopbit	1, 2
	Parity	no, even, odd
	Delay between received - sent message	basic + optional 0...200 ms
	Adjustable addresses	1...247
Communication RS 485	Max. number of device on the line	1
	Indication	Yes, LED yellow colour RS 232
	Protocol	Modbus RTU slave
	Supported functions	3, 6, 16
	Baudrate	Optional from 1,2 kBd to 115,2 kBd
	Number of bits	8
	Stopbit	1, 2
	Parity	no, even, odd
Communication USB	Delay between received - sent message	basic + optional 0...200 ms
	Adjustable addresses	1...247
	Max. number of device on the line	32
	Indication	Yes, LED yellow colour RS 485
	Protocol	Modbus RTU slave
	Supported functions	3, 6, 16
	Baudrate	115,2 kBd
	Number of bits	8
EnOcean	Stopbit	1
	Parity	no
	Adjustable addresses	1
	Max. number of device on the line	1
Operating conditions	Indication	Yes, LED yellow colour USB
	Frequency	868 MHz
	Maximum number of handled devices	40
Dimensions	Supported elements of communication	Raw data: RPS/1BS, 4BS, VLD
	IP code	IP20
	Operating temperature	-20 °C to +70 °C
Weight	Relative humidity	max. 80 %
	Dimensions without antenna	17,5 x 56,4 x 102 mm (W x H x D)
	Weight without antenna	53 g

FIRVENA



FIRVENA s.r.o.
 Zamecke namesti 26
 738 01 Frydek-Mistek
 Czech Republic



+420 777 879 762
 +420 558 111 253



firvena@firvena.cz



www.firvena.com